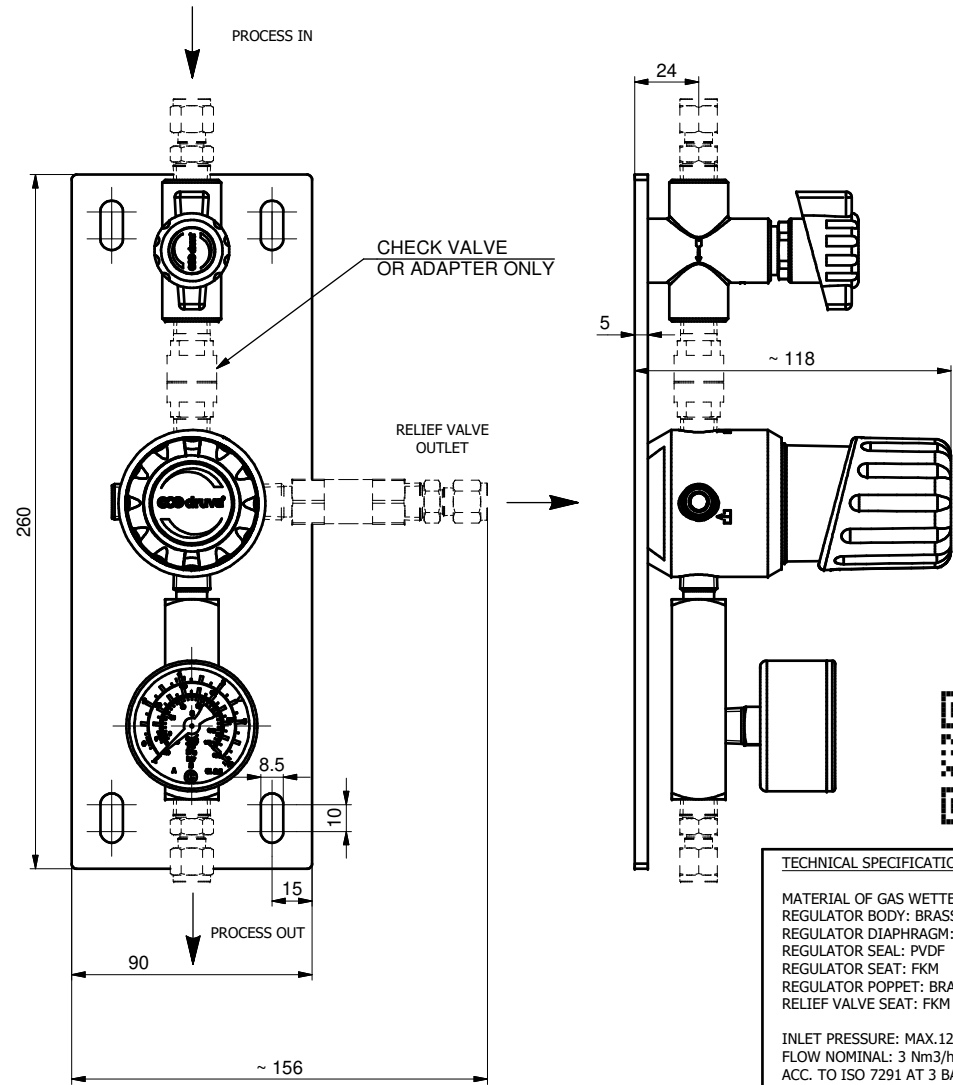
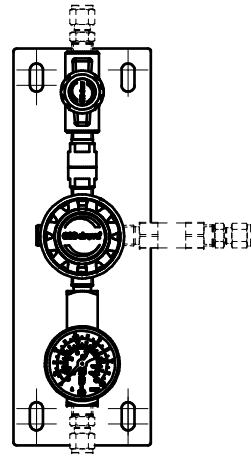
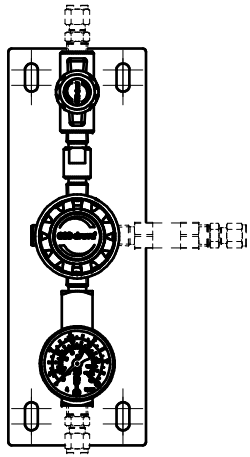


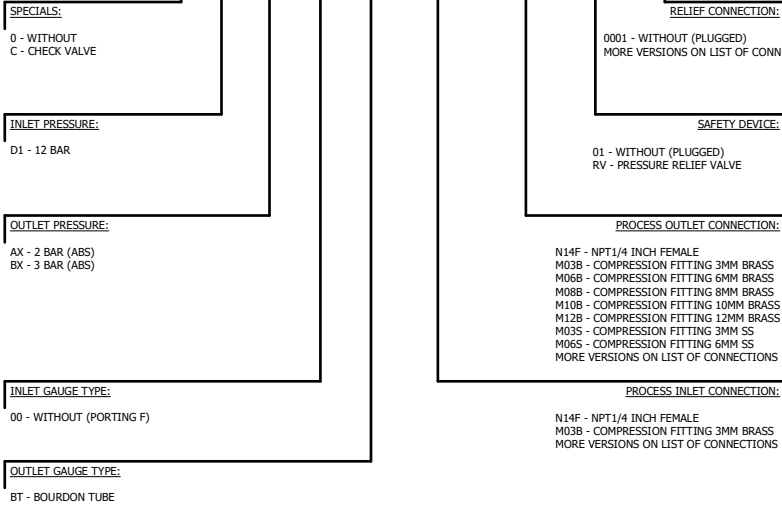
SPECIAL - 0

SPECIAL - C



**ORDERING INFORMATION**

PPLAVFT X XX XX XX XX XXXX XXXX XX XXXX



**LIST OF CONNECTIONS**

- N14F - NPT1/4 INCH FEMALE
- M03B - COMPRESSION FITTING 3MM BRASS (NOT FOR RELIEF CONN.)
- M06B - COMPRESSION FITTING 6MM BRASS
- M08B - COMPRESSION FITTING 8MM BRASS
- M10B - COMPRESSION FITTING 10MM BRASS
- M12B - COMPRESSION FITTING 12MM BRASS
- M03S - COMPRESSION FITTING 3MM SS (NOT FOR RELIEF CONN.)
- M06S - COMPRESSION FITTING 6MM SS
- M08S - COMPRESSION FITTING 8MM SS
- M10S - COMPRESSION FITTING 10MM SS
- M12S - COMPRESSION FITTING 12MM SS
- DX2B - COMPRESSION FITTING 1/8" BRASS
- DX4B - COMPRESSION FITTING 1/4" BRASS
- DX6B - COMPRESSION FITTING 3/8" BRASS
- DX8B - COMPRESSION FITTING 1/2" BRASS
- DX2S - COMPRESSION FITTING 1/8" SS
- DX4S - COMPRESSION FITTING 1/4" SS
- DX6S - COMPRESSION FITTING 3/8" SS
- DX8S - COMPRESSION FITTING 1/2" SS
- H04B - HOSE NOZ MET 4.8 MM BRASS (NOT FOR INLET AND RELIEF CONN.)
- H06B - HOSE NOZ MET 6.4 MM BRASS (NOT FOR INLET AND RELIEF CONN.)
- H08B - HOSE NOZ MET 8.0 MM BRASS (NOT FOR INLET AND RELIEF CONN.)
- H04S - HOSE NOZ MET 4.8 MM SS (NOT FOR INLET AND RELIEF CONN.)
- H06S - HOSE NOZ MET 6.4 MM SS (NOT FOR INLET AND RELIEF CONN.)
- H08S - HOSE NOZ MET 8.0 MM SS (NOT FOR INLET AND RELIEF CONN.)

AVAILABILITY OF BRASS FITTINGS DEPENDING ON PRESSURE AND SIZE.  
PAY ATTENTION TO THE MAXIMUM APPROVED PRESSURE OF YOUR PIPEWORK

HOSE NOZZLE MAX. 15 BAR

**TECHNICAL SPECIFICATION**

MATERIAL OF GAS WETTED PARTS:  
REGULATOR BODY: BRASS (CW614N)  
REGULATOR DIAPHRAGM: HASTELLOY (C276)  
REGULATOR SEAL: PVDF  
REGULATOR SEAT: FKM  
REGULATOR POPPET: BRASS (CW614N)  
RELIEF VALVE SEAT: FKM

INLET PRESSURE: MAX.12 BAR  
FLOW NOMINAL: 3 Nm3/h (N2)  
ACC. TO ISO 7291 AT 3 BAR ABS OUT

GAS TYPE  
DEFINED BY PRODUCT LINE AND TYPE  
(CHECK APPROVED GAS TYPE IN DATASHEET)

PUR LINE:  
NON-CORROSIVE GASES  
NON-TOXIC GASES

EXAMPLE: PPLAVFT0D1AX00BTM06SM06BRVM06B

Polotovár Raw material	Dim. of raw material	Povrchová úprava Surface finish	Váha Weight
Materiál Material	Materiál Material	Starý výkres Old drawing	1 / 2
Komentář Notice	Opracování / Machining Ra	Kritický rozměr značen Critical dimension marked	KR
Datum vypracování Creation date	8.11.2021	Netol. rozměry / Dim. without tol. ISO 2768 m,K	
Vypracoval Created	Chadim		
Kontrola Inspected	L. Ondráček		
Schválil Approved	Dr. Thorsten Küster		
Klasifikace Item Class	B: Standard		
Měřítko / Scale 1:2			
POU PUR LINE LOW FLOW AV POU PUR 003Q AV			
GCG			PPLAVFT